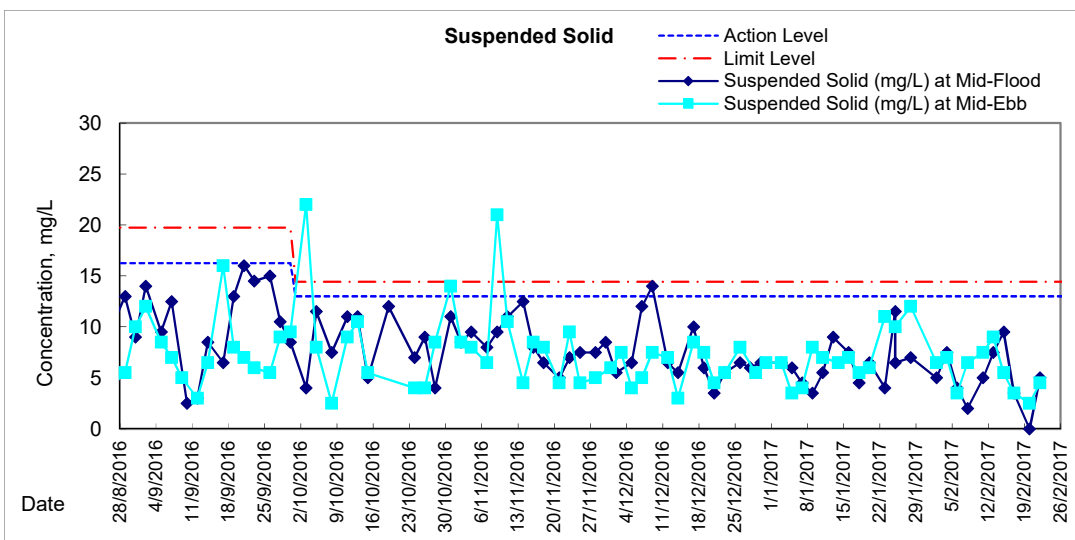
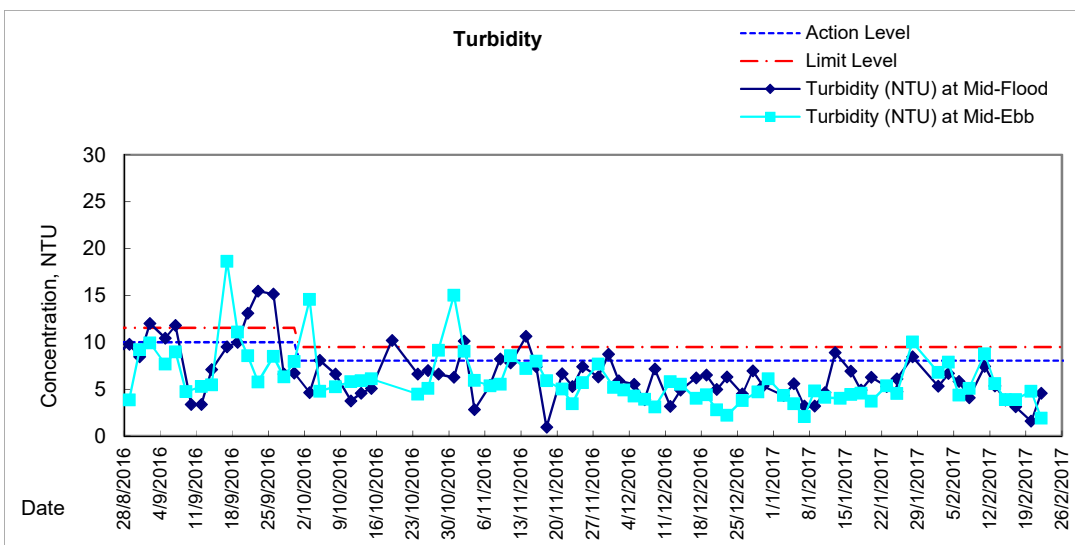
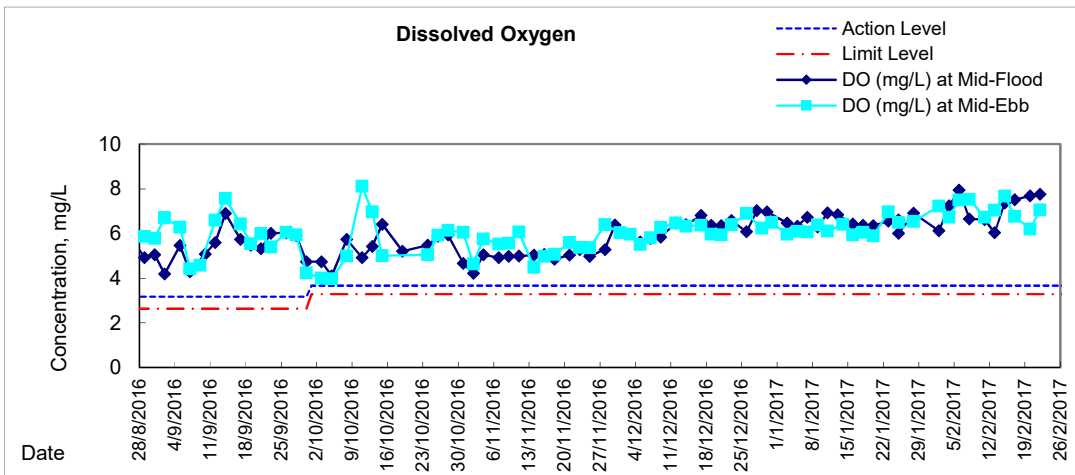
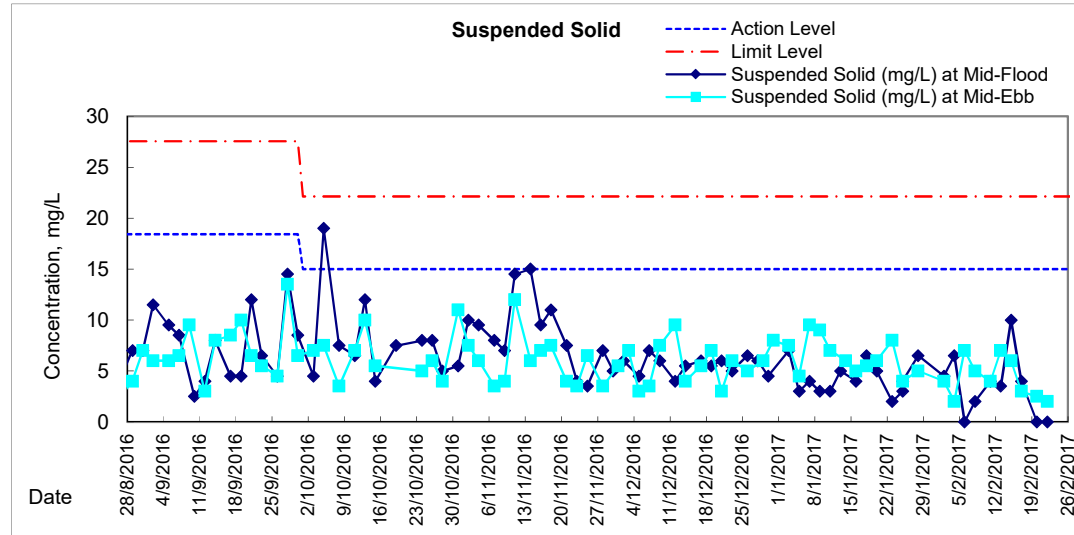
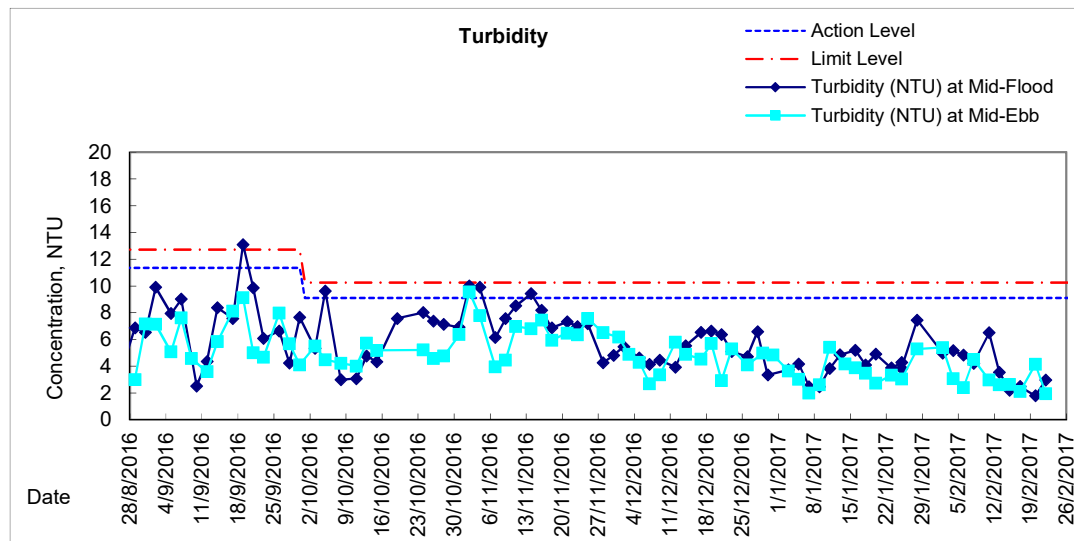
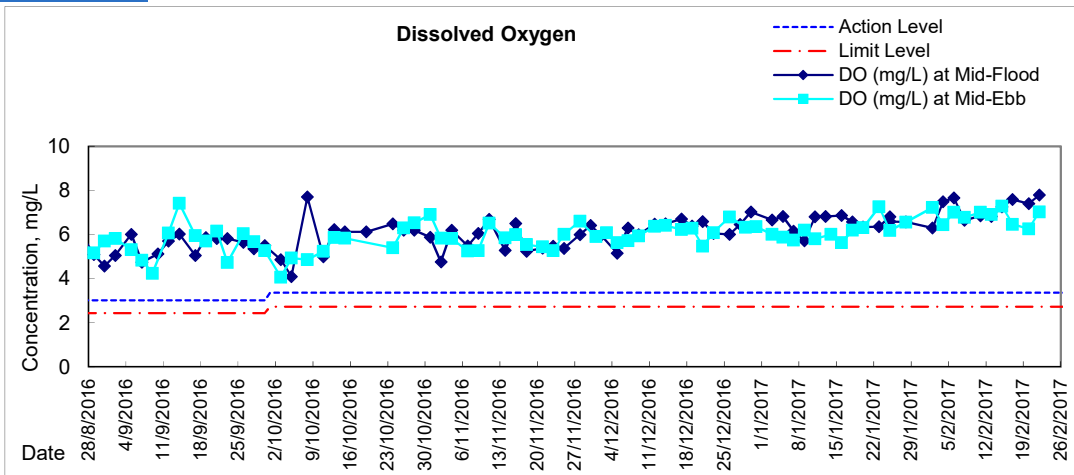




Graphic Presentation of Water Quality Result of WSD19 - Sheung Wan

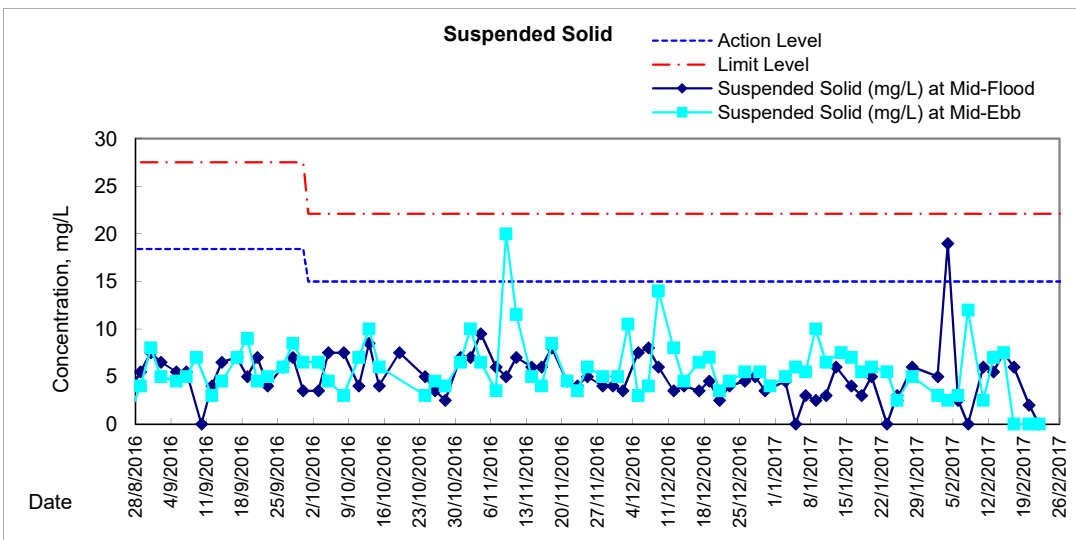
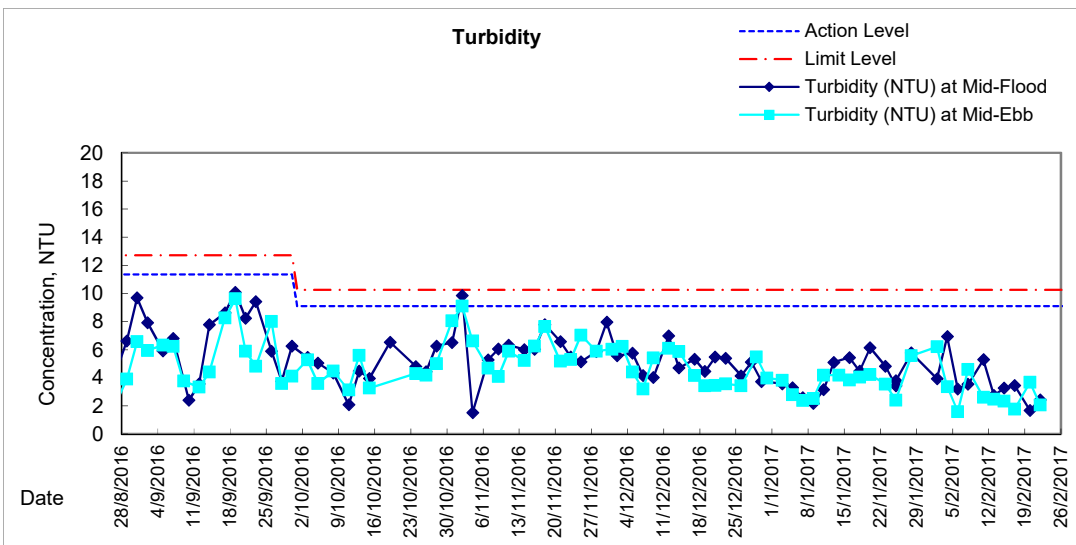
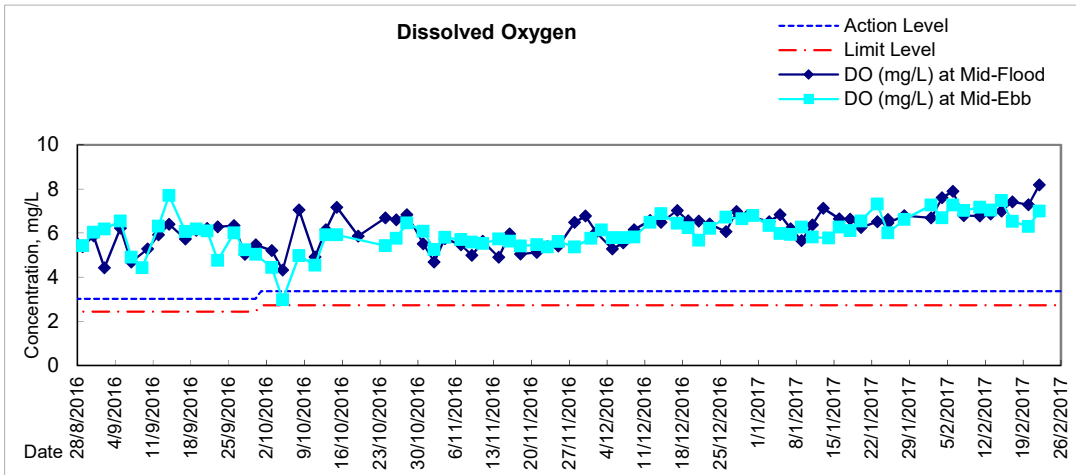


Graphic Presentation of Water Quality Result of C1 - HKCEC



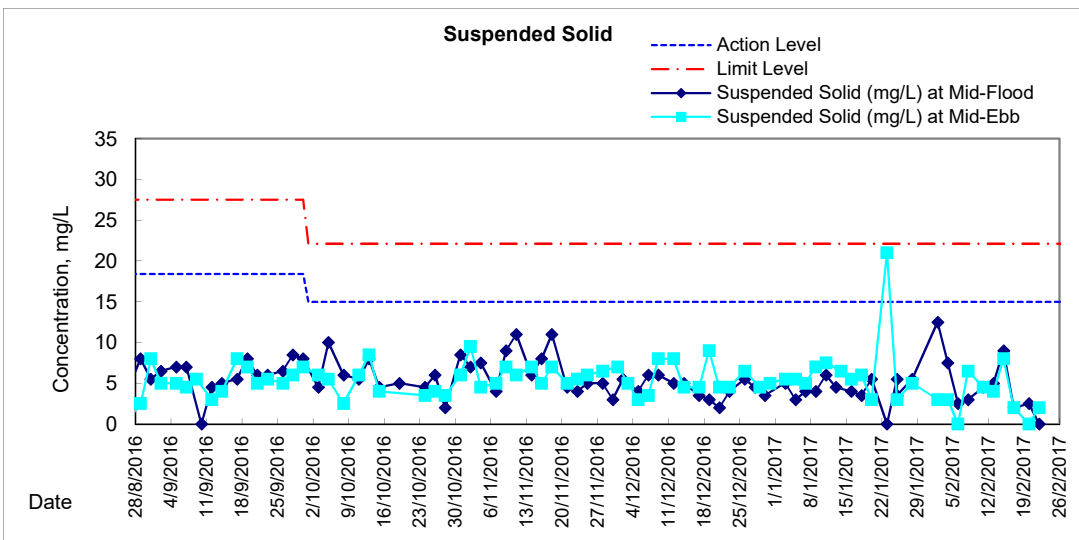
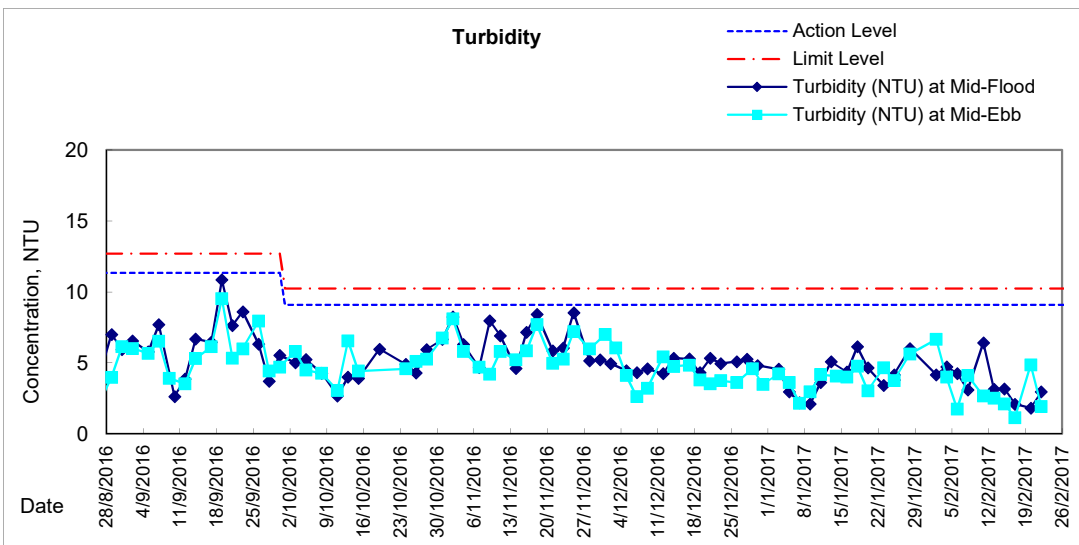
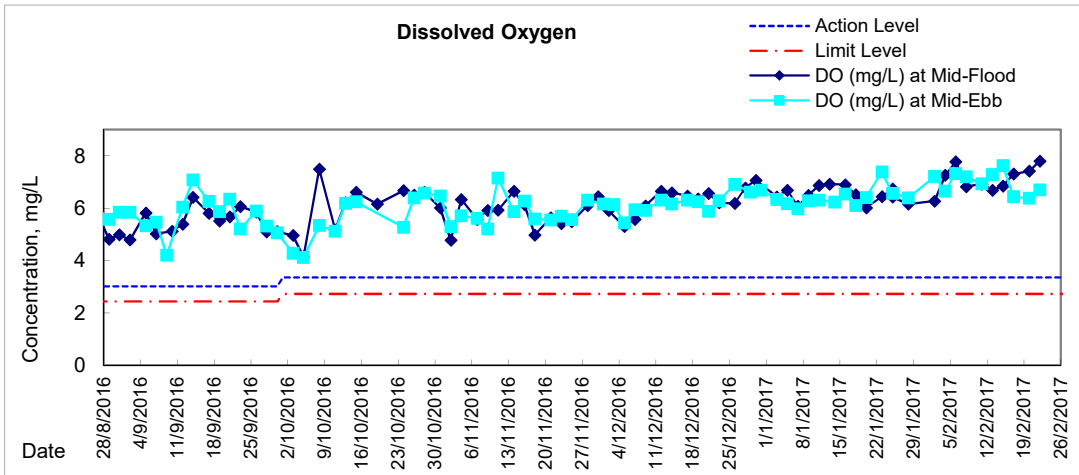


Graphic Presentation of Water Quality Result of P1 - HKCEC Phase I



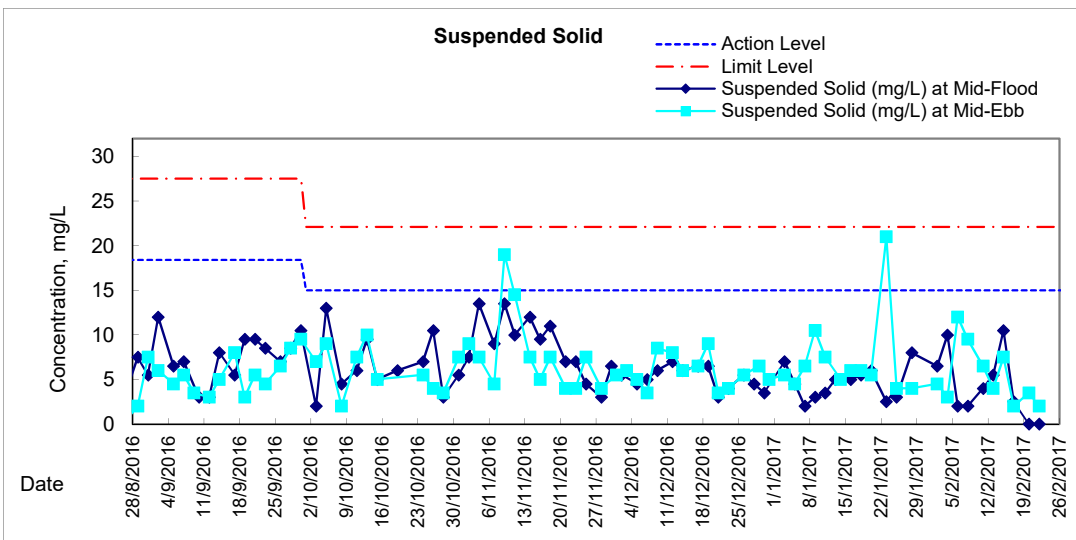
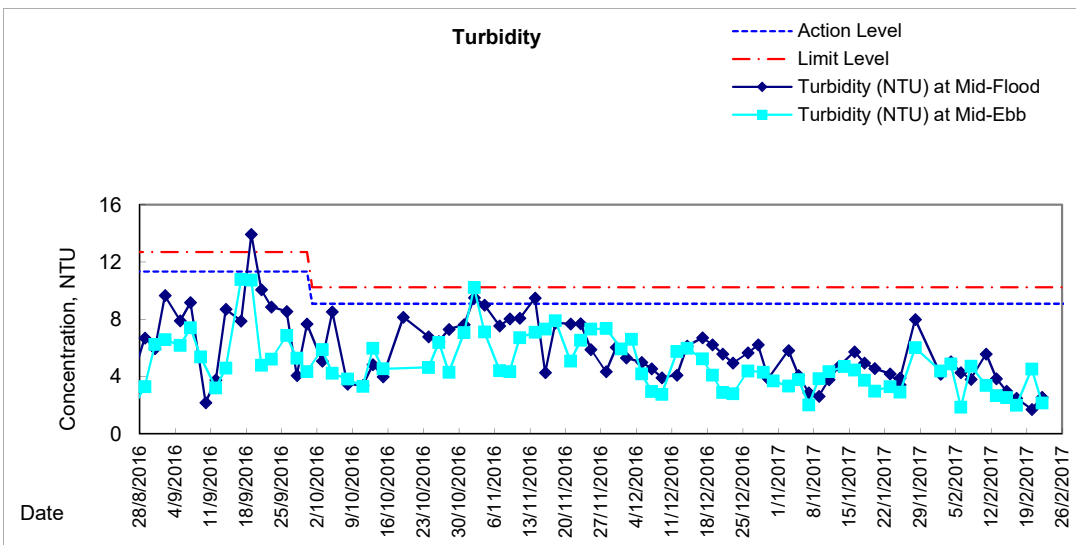
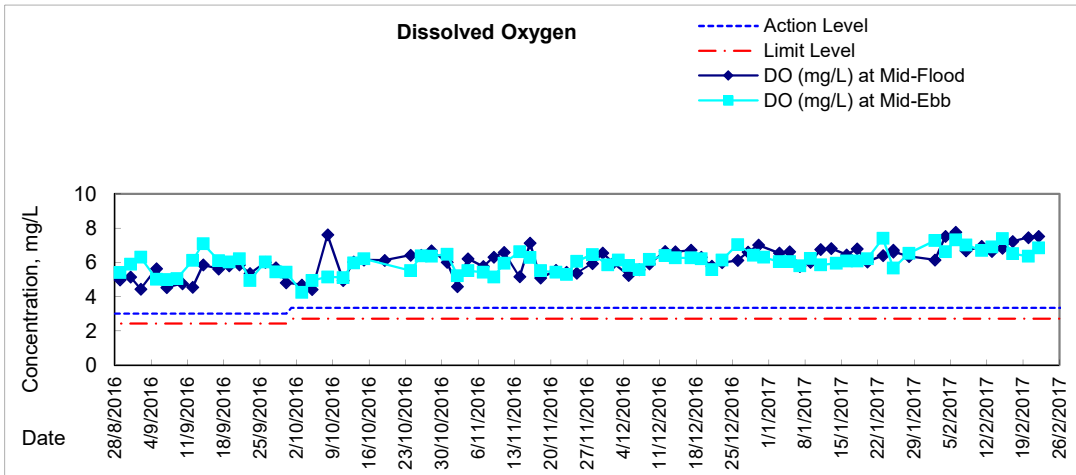


Graphic Presentation of Water Quality Result of P3 - APA



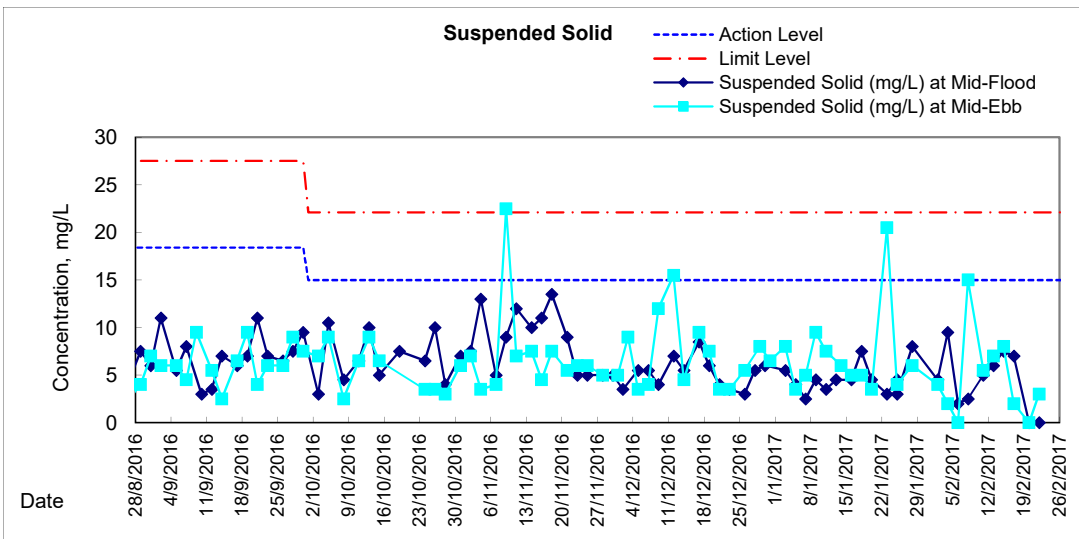
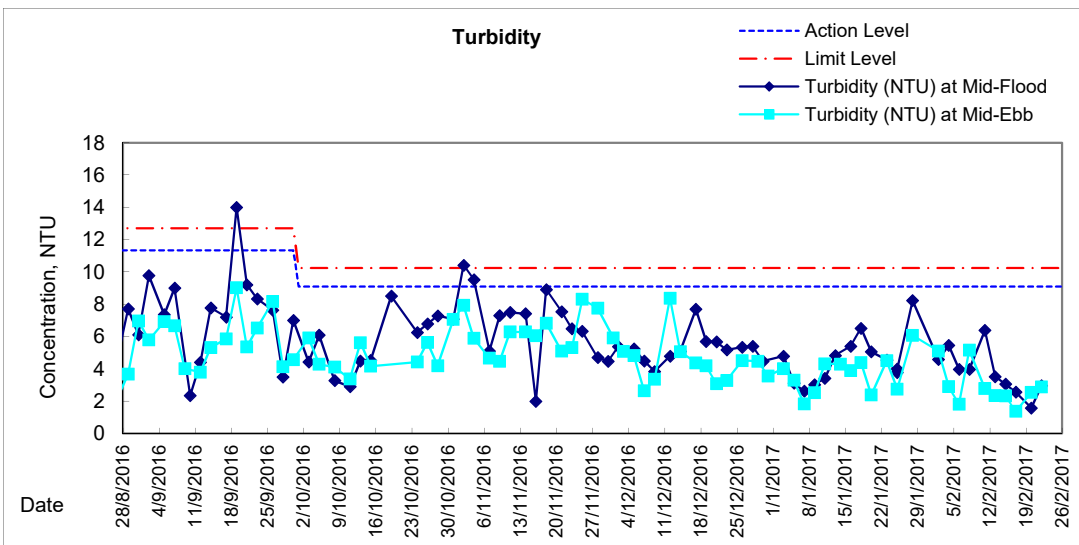
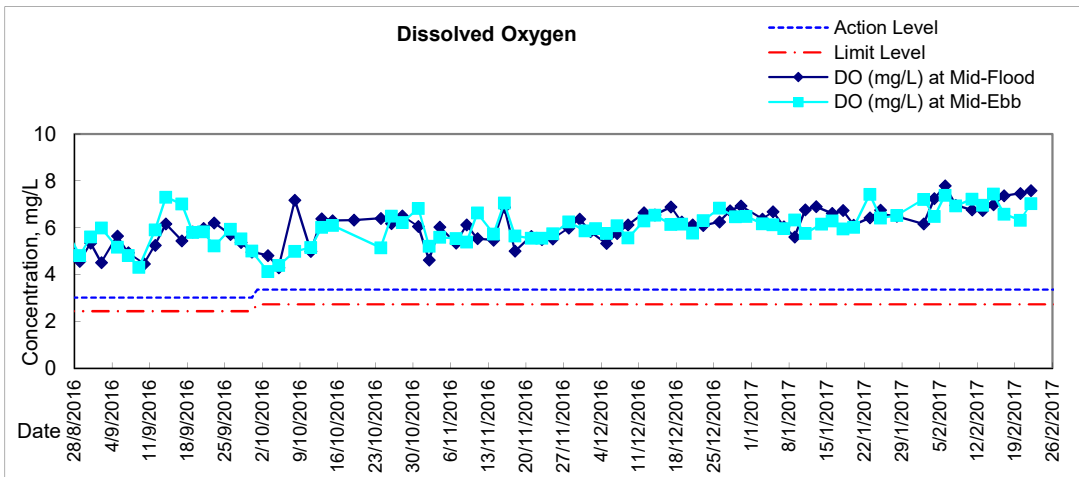


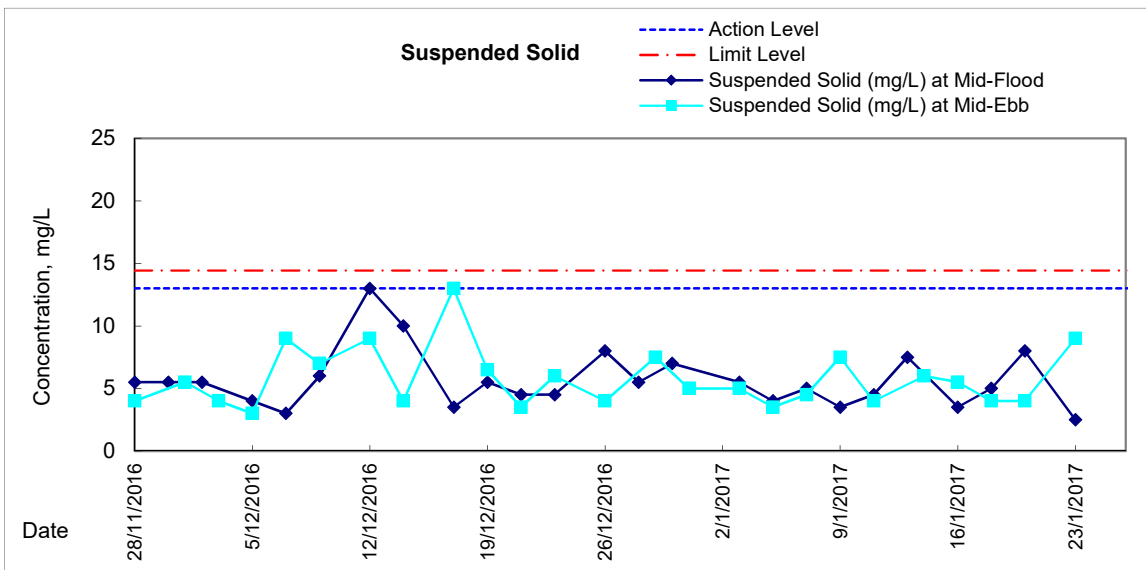
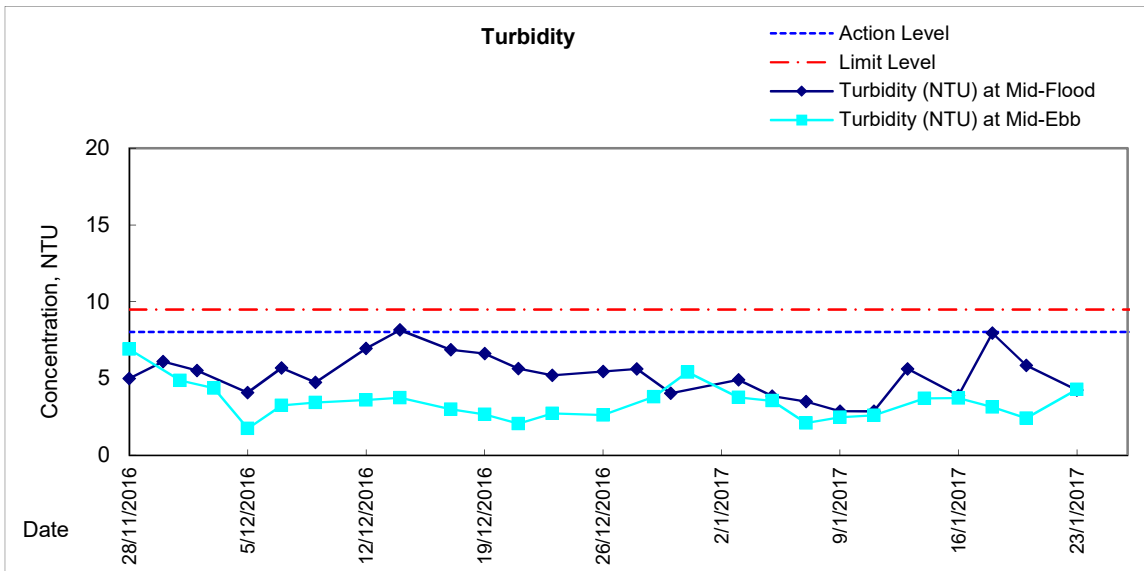
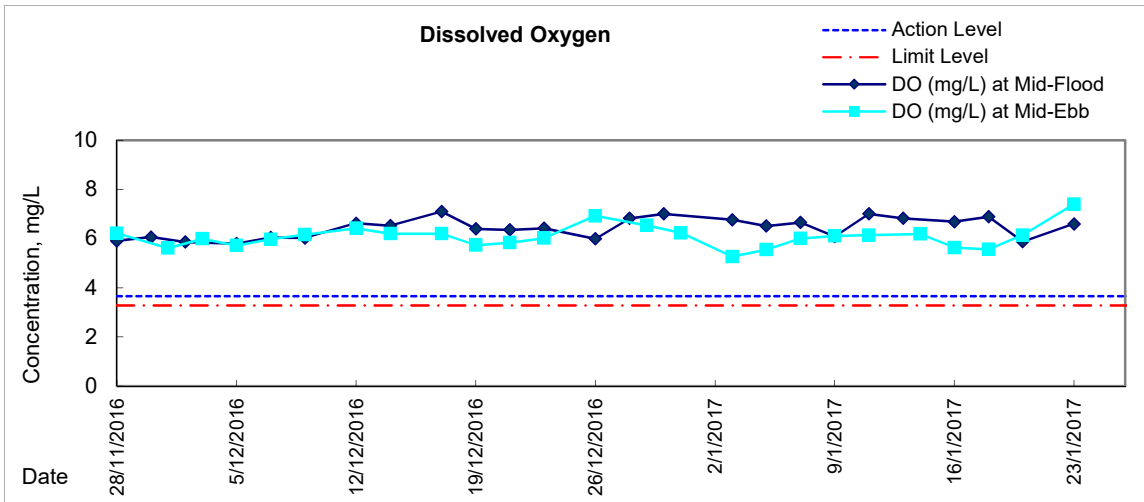
Graphic Presentation of Water Quality Result of P5 - WCT / RT / IT





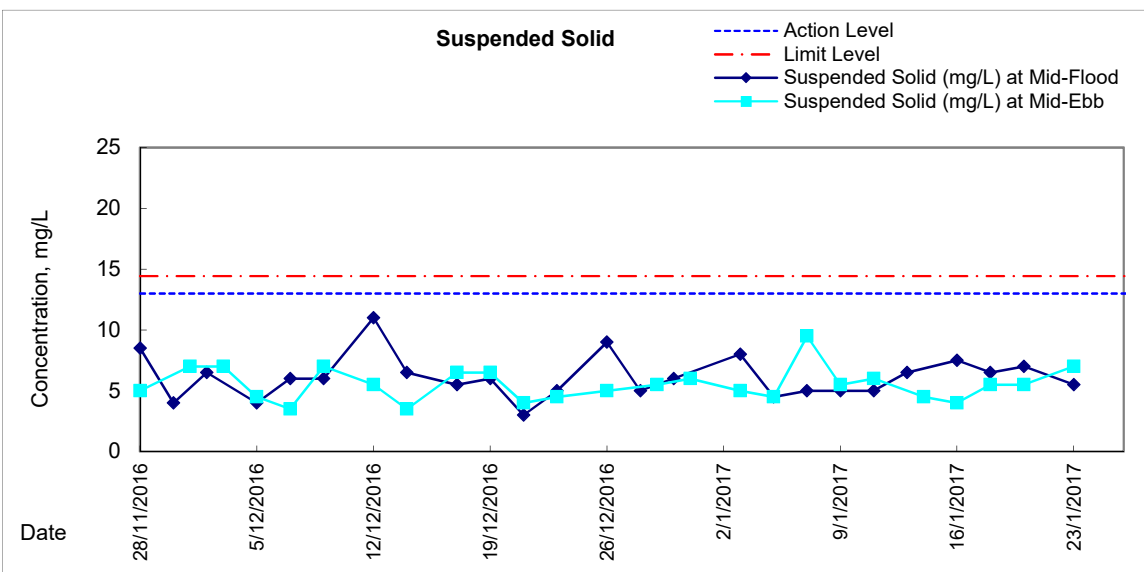
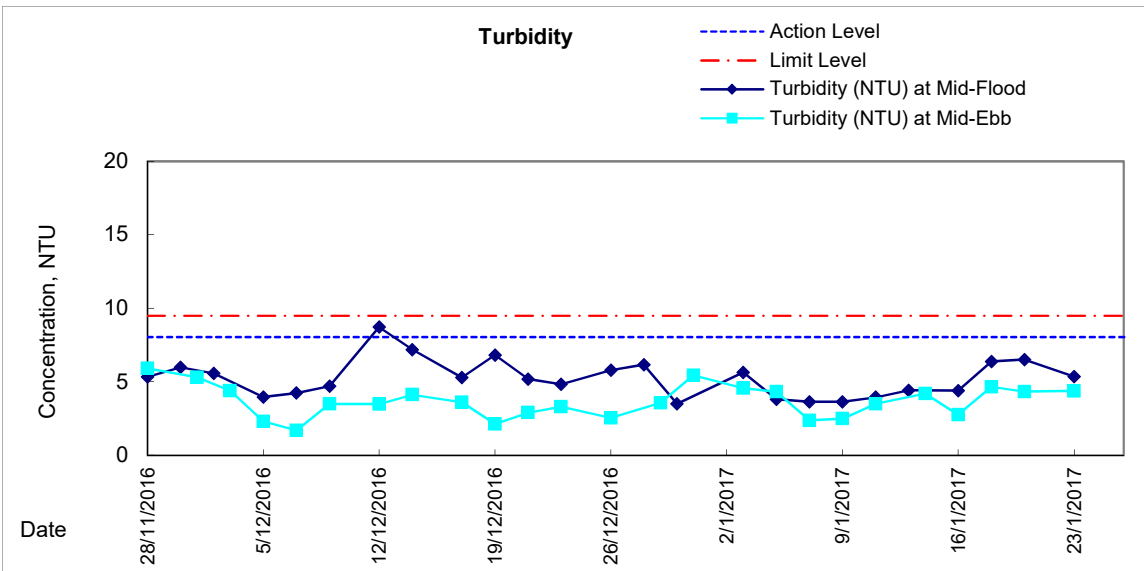
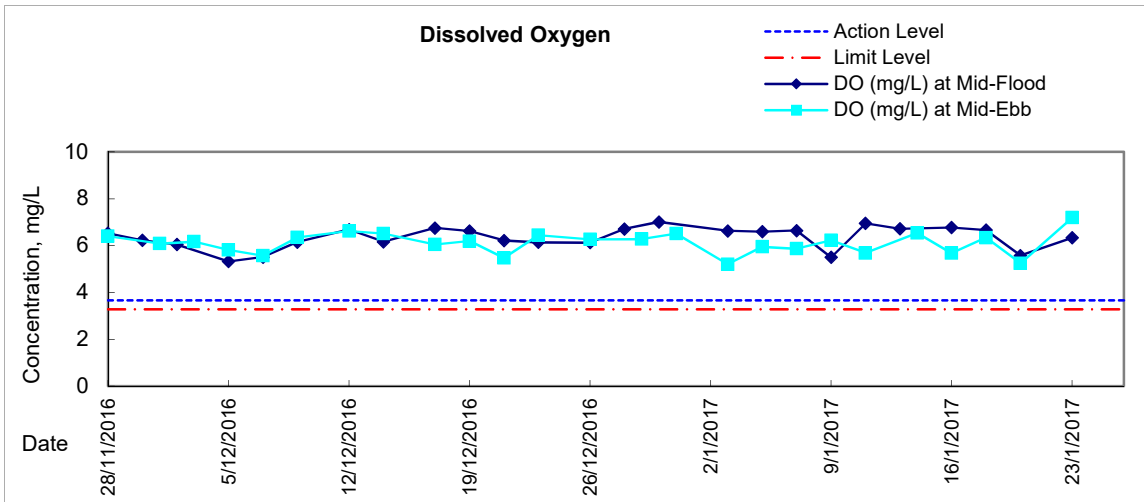
Graphic Presentation of Water Quality Result of P4 - SOC

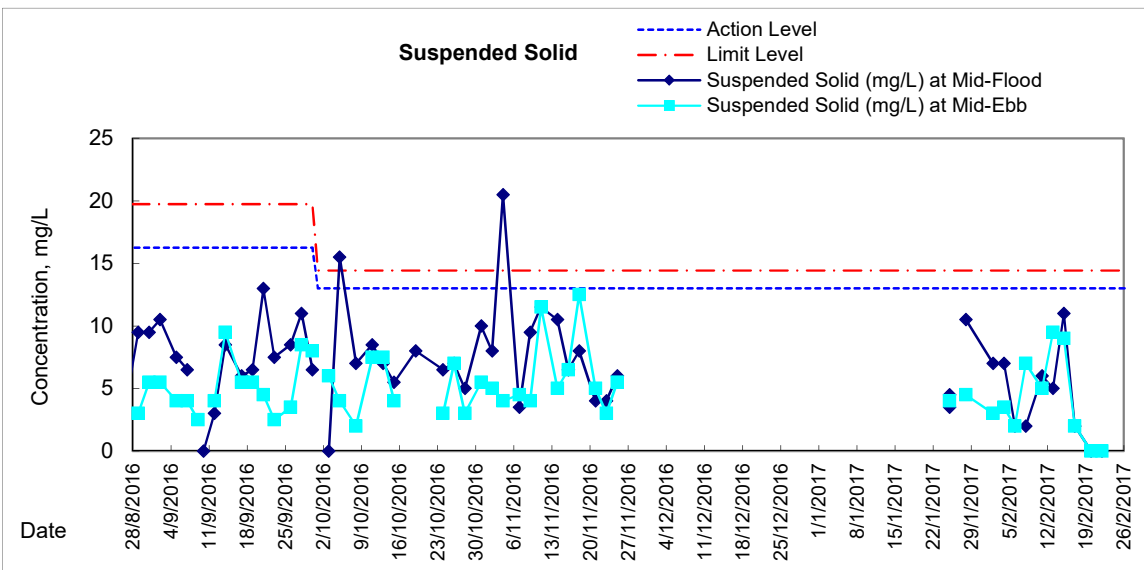
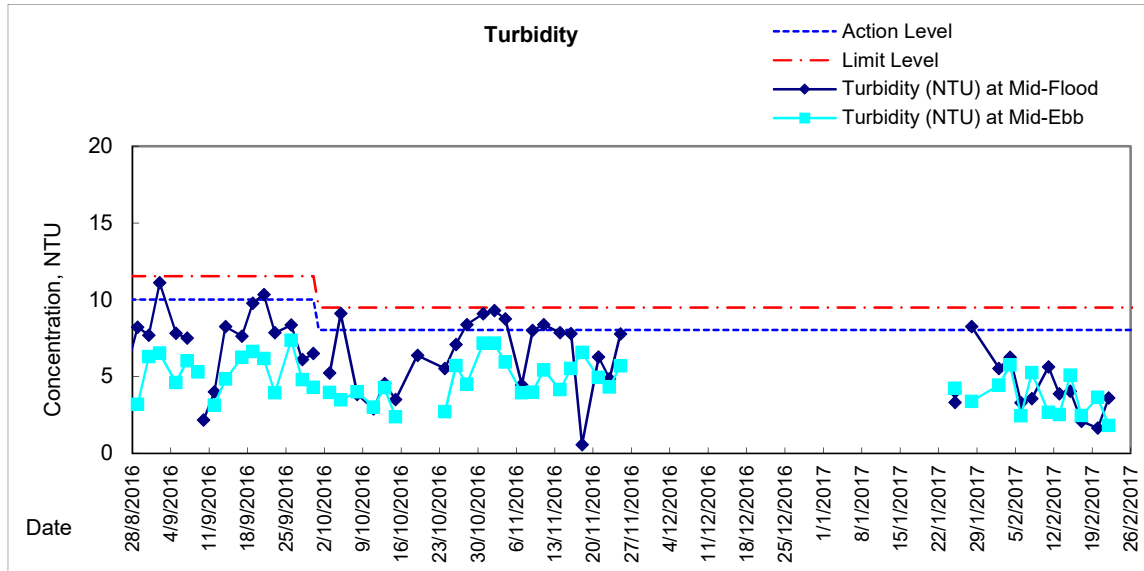
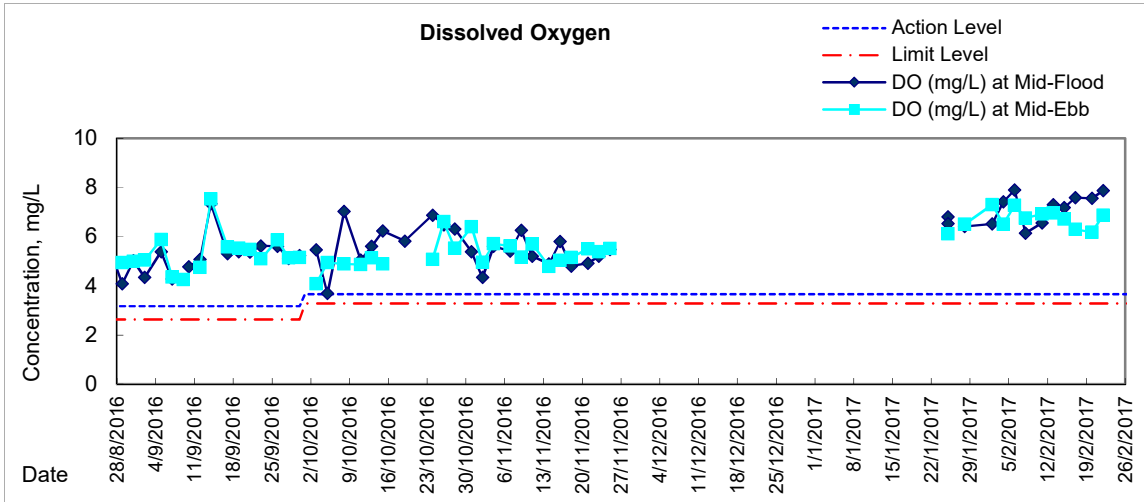






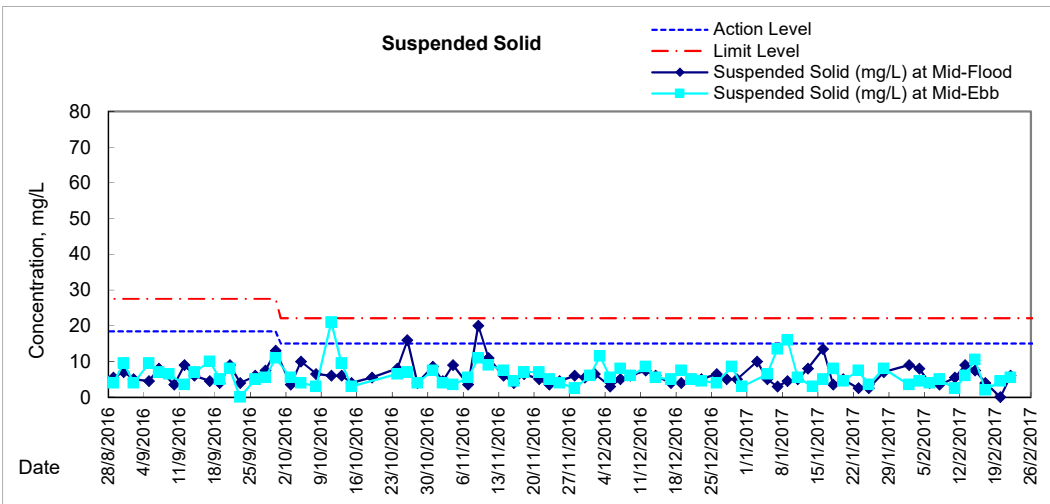
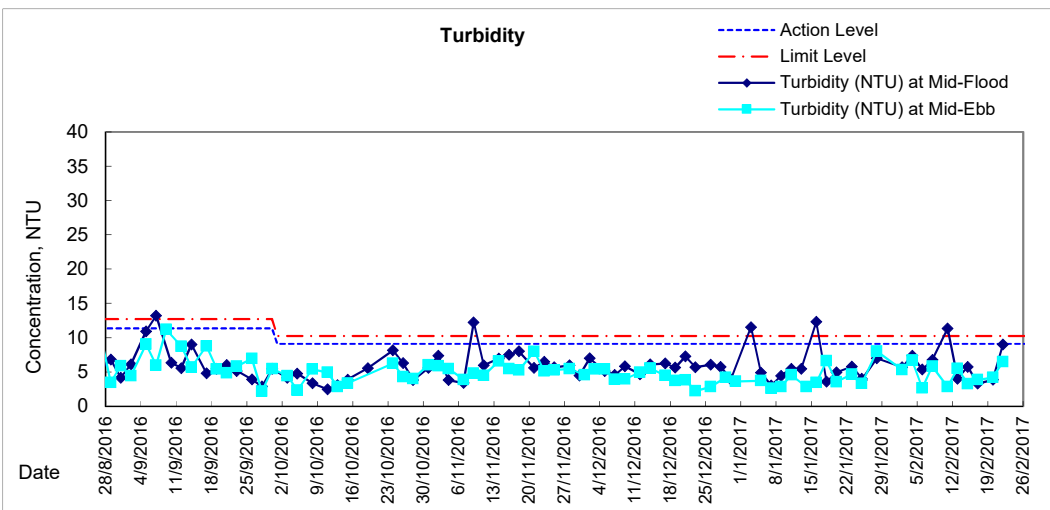
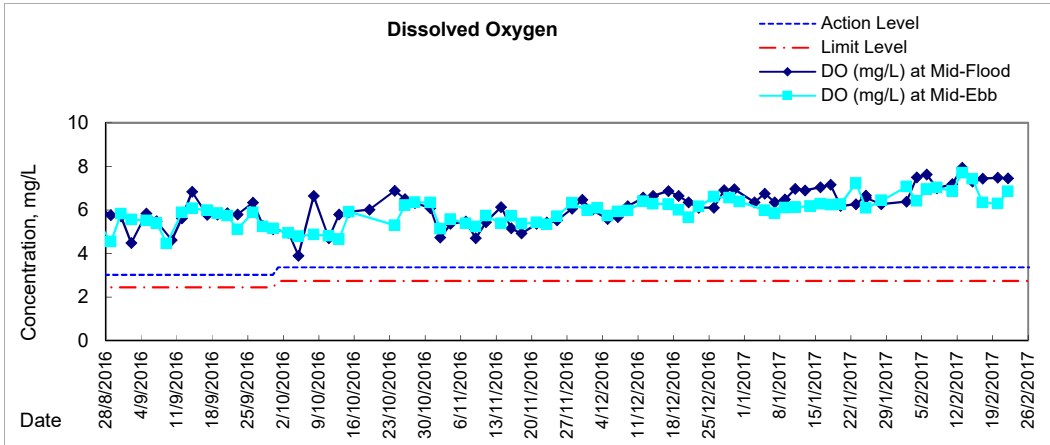
Graphic Presentation of Water Quality Result of RW21-P789E - GEC/CRC/SHK



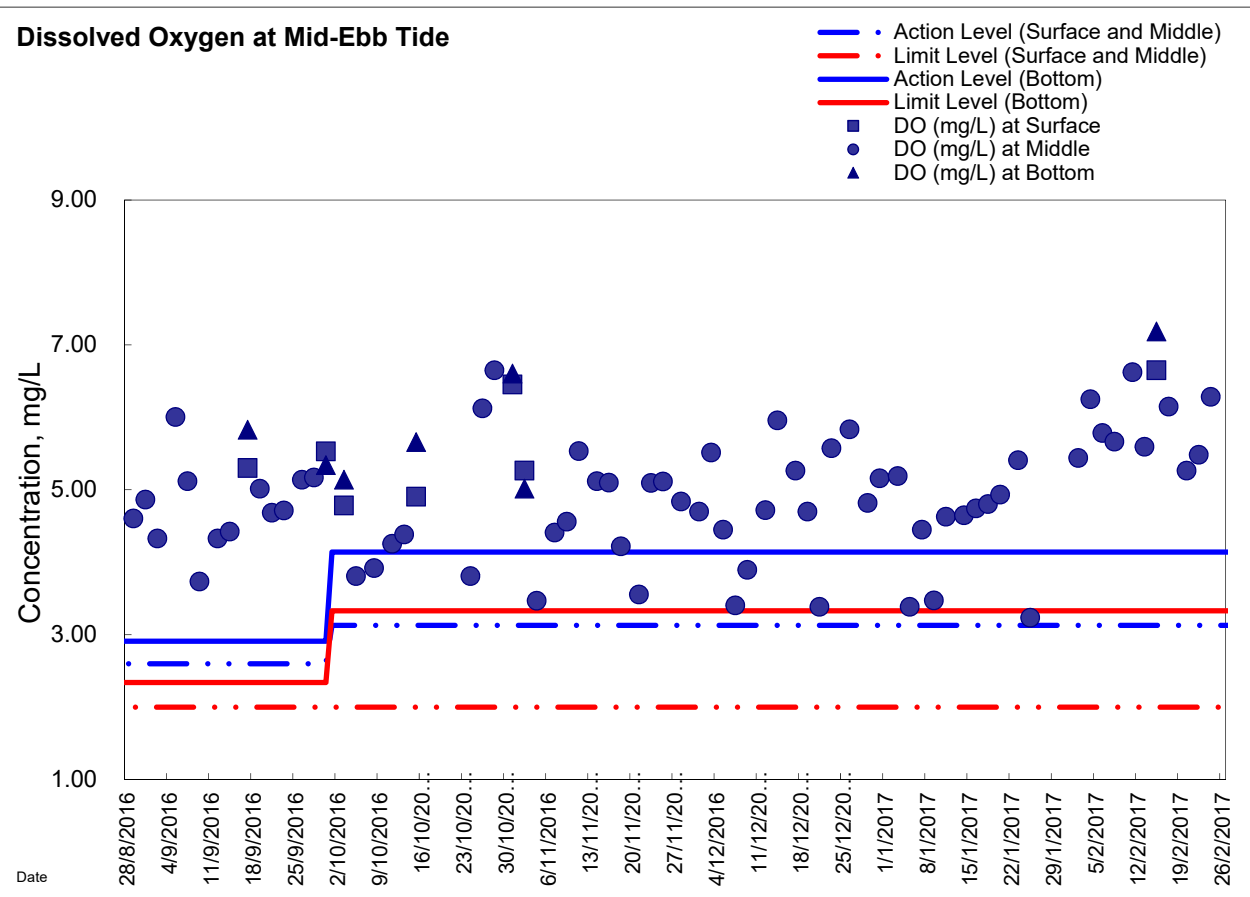
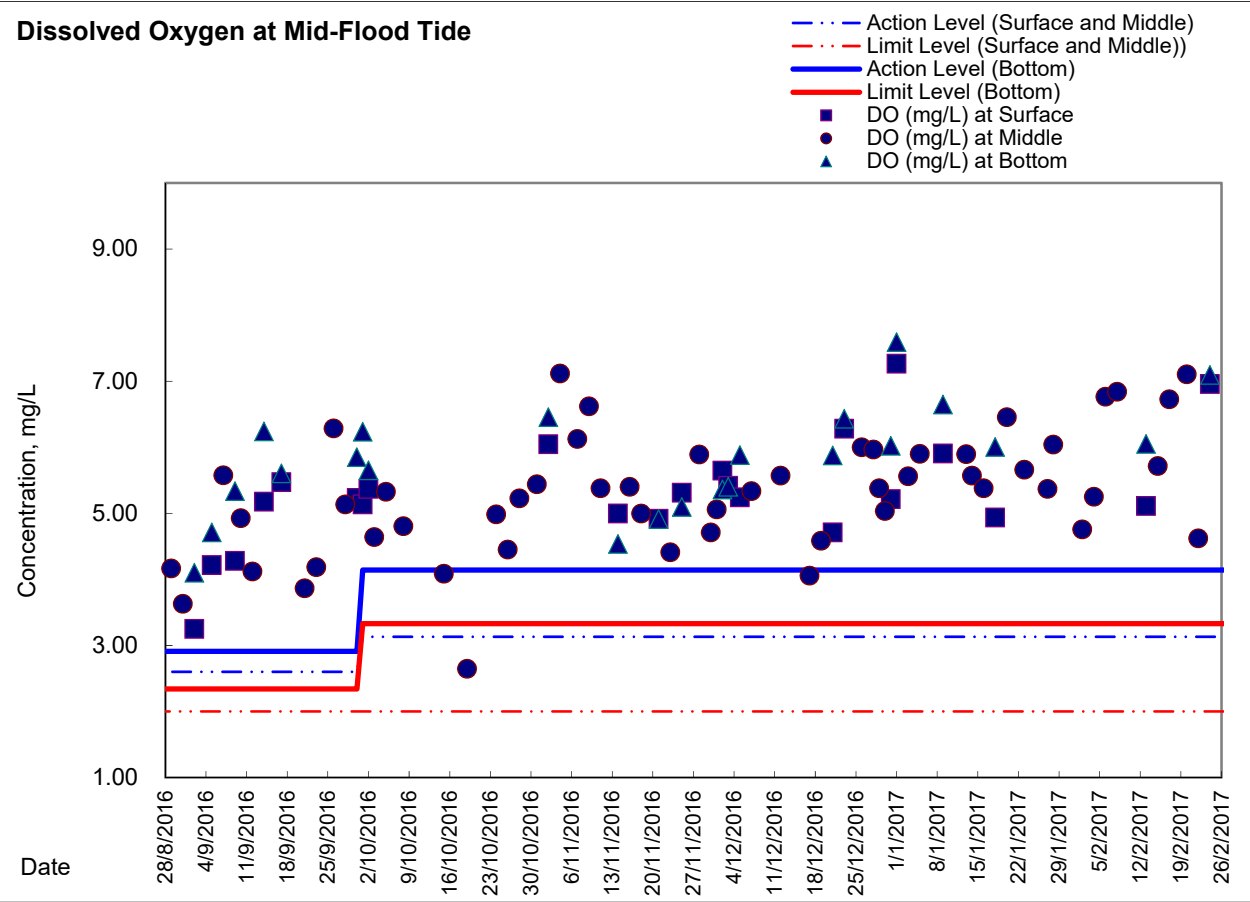


Remarks: With respect to the removal of silt screen system for Cooling Water Intakes P7, P8, P9 and WSD Water Intake RW21, the respective water quality monitoring at monitoring station RW21-P789 was adjusted to RW21-P789 East (RW21-P789E) and RW21-P789 West (RW21-P789W) from 28 November 2016 ebb tide. Due to the reinstatement of the captioned silt screen system, the respective water quality monitoring was reverted to previous monitoring station RW21-P789 from 25 January 2017 onwards.

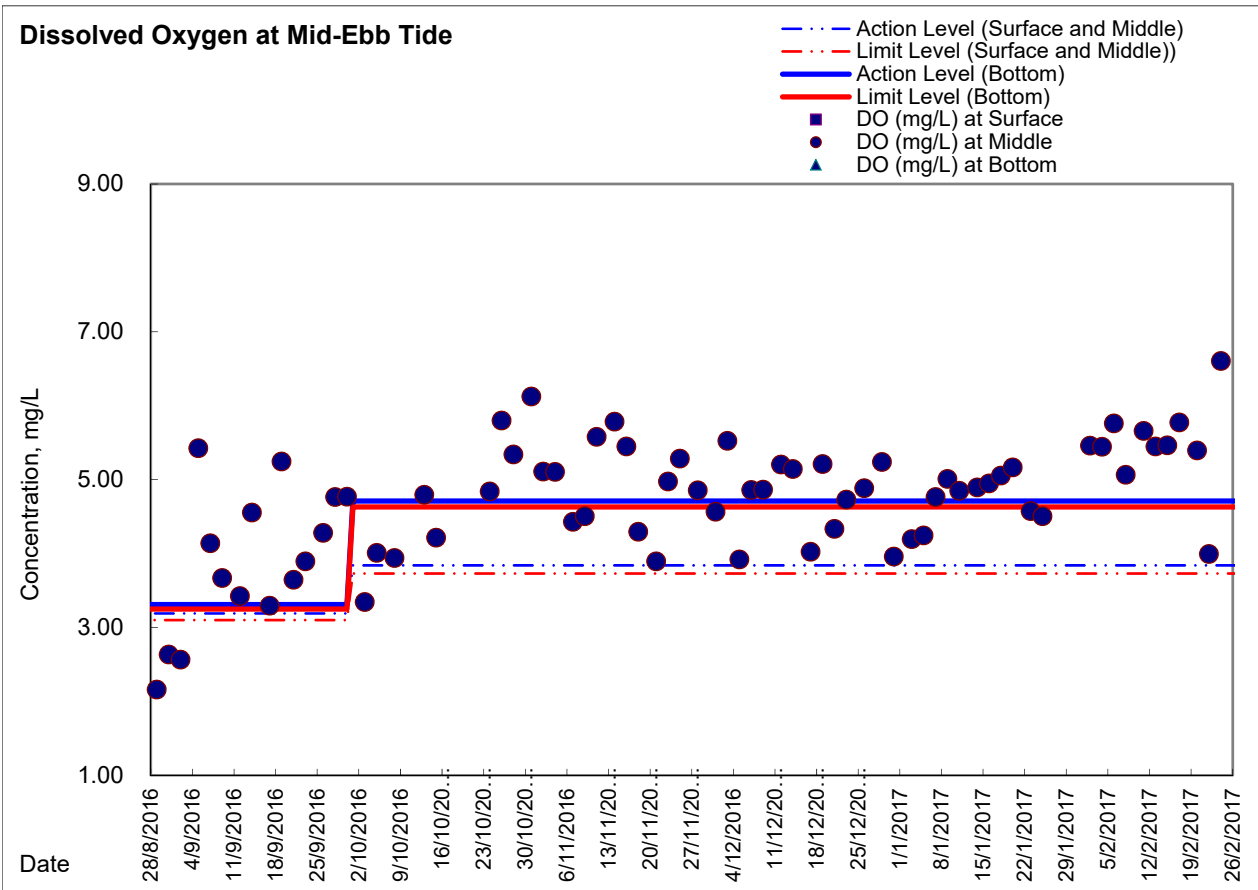
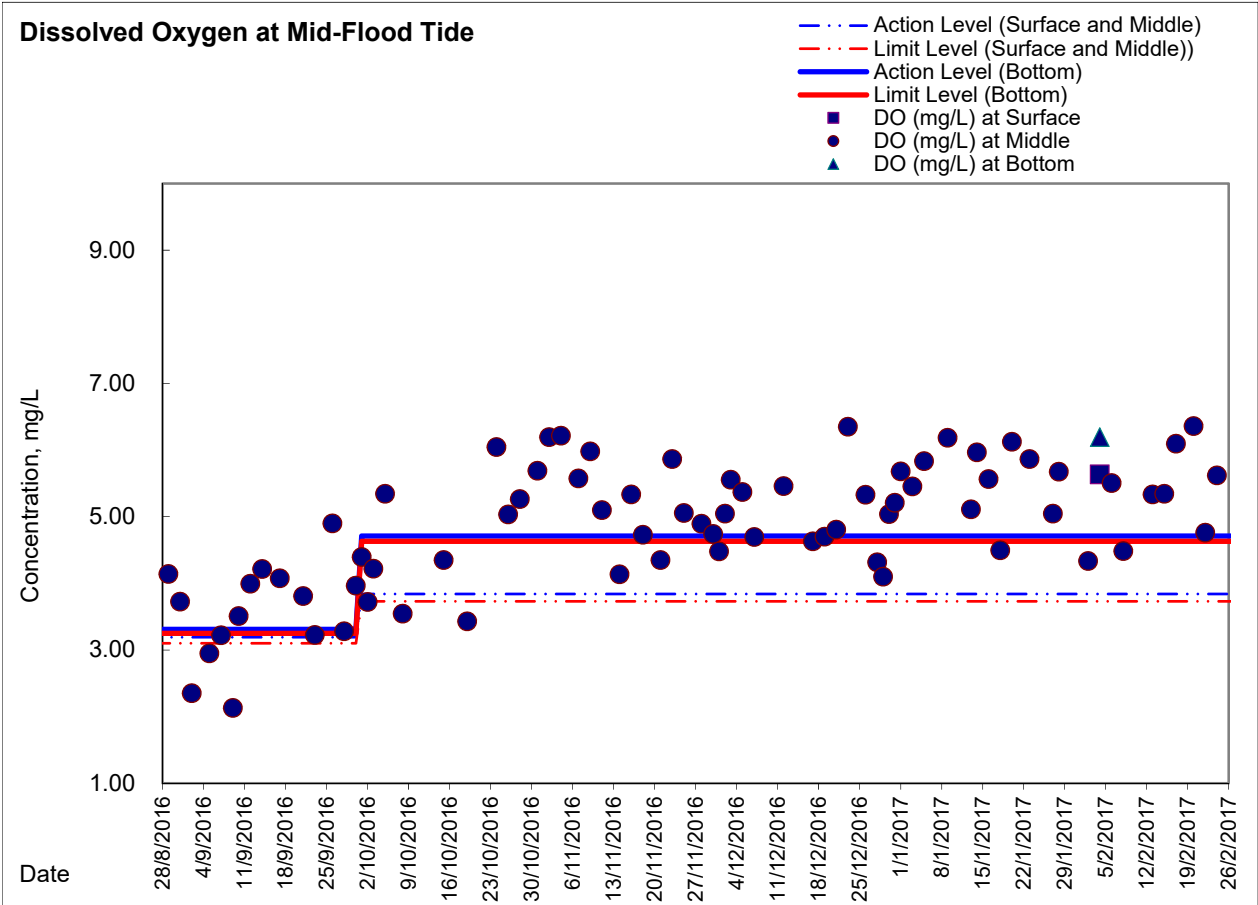
Graphic Presentation of Water Quality Result of C7 - Windsor House



Graphic Presentation of Enhanced Water Monitoring Results (DO) at C6 - Excelsior Hotel



**Graphic Presentation of Enhanced Water Monitoring Results (DO) at Ex-WPCWA SW
- South-western corners of ex-Public Cargo Works Area**



**Graphic Presentation of Enhanced Water Monitoring Results (DO) at Ex-WPCWA SE
- South-eastern corners of ex-Public Cargo Works Area**

